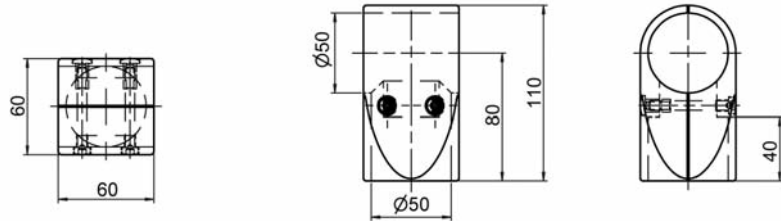




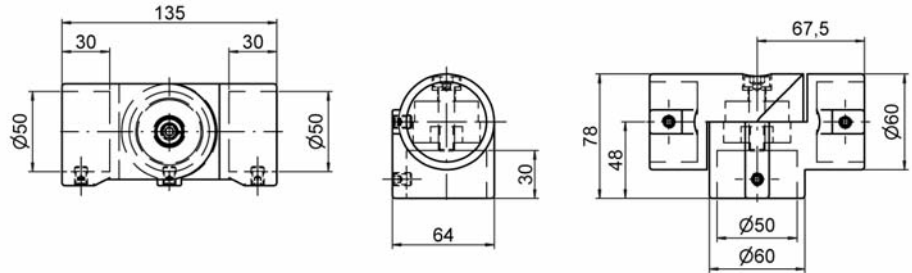
Bestell-Nr. **RV-5540***
Order no.

T-Verbinder, 2-schalig T-Connector, 2-shell



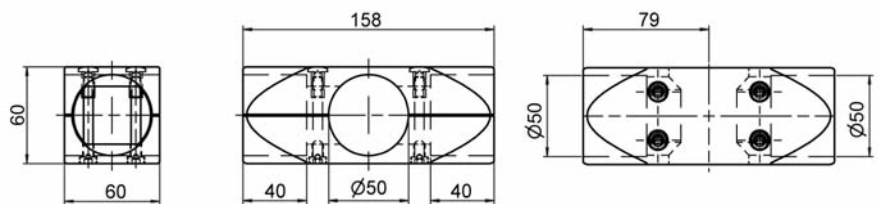
Bestell-Nr. **RV-5521 a***
Order no.

T-Gelenkverbinder, 1-schalig T-joint connector, 1-shell



Bestell-Nr. **RV-5541***
Order no.

Kreuz-Verbinder, 2-schalig Cross-connector, 2-shell

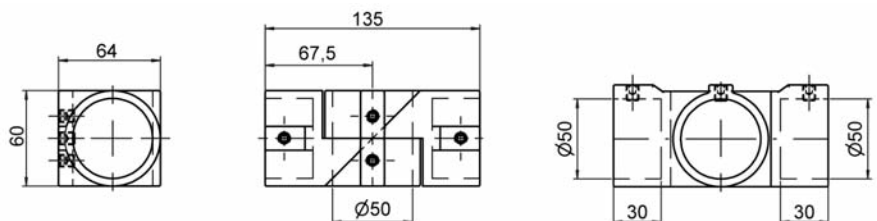


Ø
50
mm



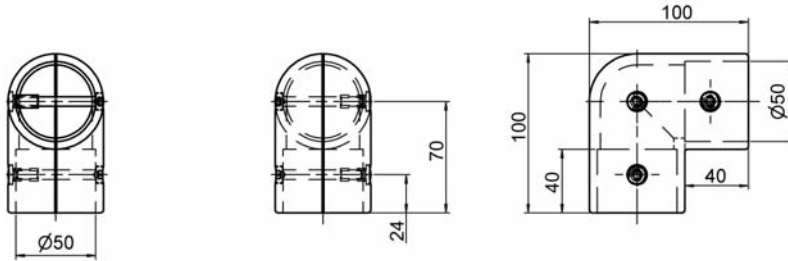
Bestell-Nr. **RV-5522 a***
Order no.

Kreuz-Gelenkverbinder, 1-schalig Cross-joint connector, 1-shell



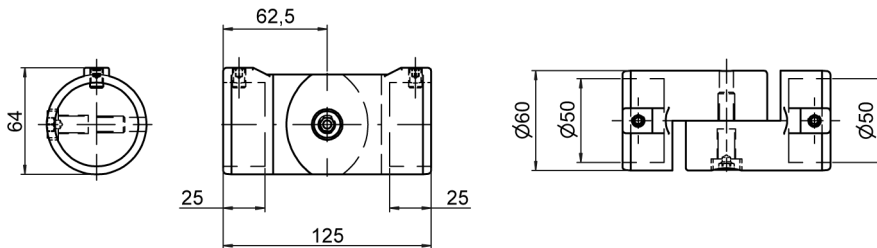
Winkel-Verbinder 90°, 2-schalig Angle-connector 90°, 2-shell

Bestell-Nr. **RV-5545***
Order no.



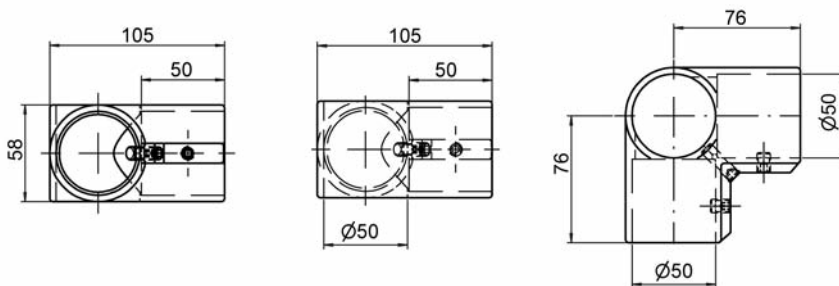
Winkel-Gelenkverbinder, 1-schalig Angle joint connector, 1-shell

Bestell-Nr. **RV-5514***
Order no.



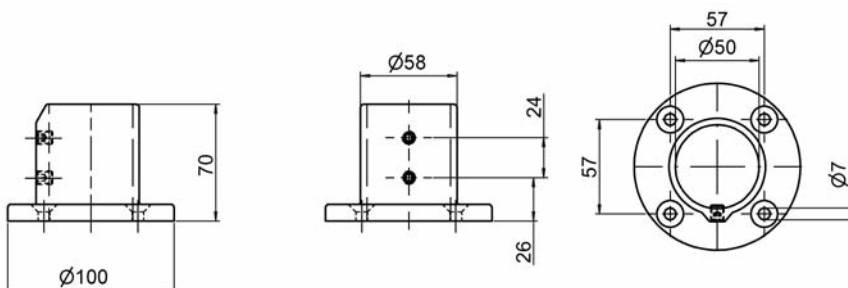
Eck-Verbinder 90°, 1-schalig Corner connector 90°, 1-shell

Bestell-Nr. **RV-5542***
Order no.



Bodenlager, 1-schalig Ground bearing, 1-shell

Bestell-Nr. **RV-5543***
Order no.



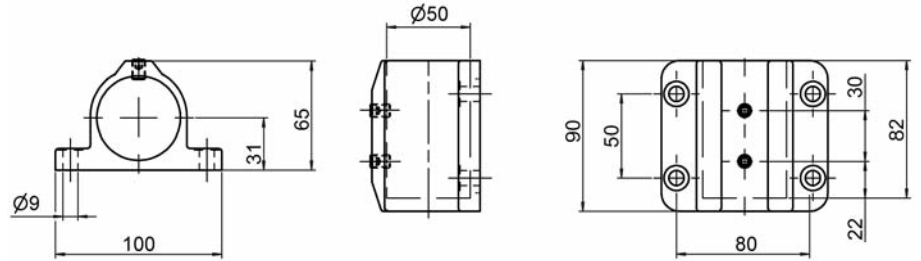
Ø
50
mm

* mit Oberflächen-Bestell-Code ergänzen (siehe Seite 282–283)
to add surface-order-code (see page 282–283)



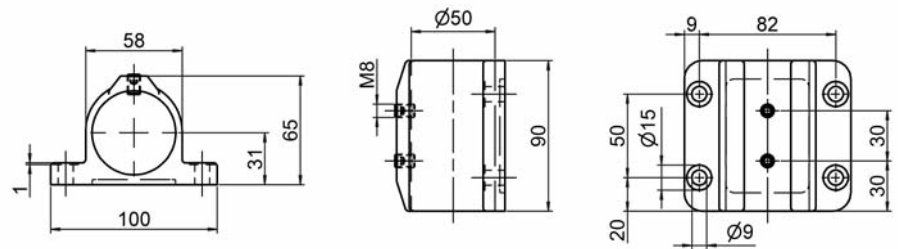
Bestell-Nr. **RV-5544***
Order no.

Wandlager, 1-schalig Wall bearing, 1-shell



Bestell-Nr. **RV-5544 a***
Order no.

Wandlager, 1-schalig Wall bearing, 1-shell



\varnothing
50
mm